

# Swap Data Repository Accelerators

Offering firms the agility to respond  
to changing market structure

The Dodd-Frank Wall Street Reform and Consumer Protection Act (“Dodd-Frank Act”) mandates swap data recordkeeping and reporting requirements for swap data repositories, derivatives clearing organizations, designated contract markets, swap execution facilities, swap dealers, major swap participants and swap counterparties who are neither swap dealers nor major swap participants.



Volante offers firms the agility to respond to changing market structure, insulation from evolving message formats and offers economies of scale by leveraging standard functions across asset classes and business processes.

### Swap data repository reporting

In compliance with the Swap Data Repository reporting (SDR) requirements (set out on page 1) DTCC has established a cross asset Global Trade Repository (GTR) as a central point of communication and storage for reporting of all OTC derivatives (swaps, mixed swaps, and security based swaps as defined in the Dodd-Frank legislation) to regulators.

The asset classes acceptable to the GTR framework are credit, equity, interest rate, FX and commodity derivatives.

The DTCC GTR service will support mandatory reporting as regulations are finalized in each country, such as the US Dodd Frank Act, Europe's European Market Infrastructure Regulation (EMIR), Hong Kong, Japan, Singapore, Canada and others.

### Volante's framework for DTCC GTR reporting

Volante's framework leverages Volante Designer. Volante Designer is a suite of modular tools for integration and management of financial data. Used by major financial institutions, exchanges and industry utilities around the world, Volante enables users to rapidly build data integration solutions to handle incoming trade data or financial messages, as well as internal data flow. With virtually no footprint in terms of infrastructure or processing overhead, it gets single projects to market fast and can be the key to enterprise integration.

### Framework for DTCC GTR reporting features

#### Single common framework

Volante offers a single common framework for all asset classes covering credit, equity, interest rate, FX and commodity derivatives giving the advantage of a common framework that can be extended to all asset classes across the organization. This framework can be easily extended to other SDR requirements in Europe and Japan as and when they are required.

#### Ready to use plug-ins

Volante's ready to use plug-ins enable users to leverage existing software and hardware to create and manage the new SDR reporting messages in the format required by DTCC. The out-of-the box message definition, validation and message flow modeling saves significant time and effort in development as well as in maintenance of the application. The plug-in covers all the messages that are required for PET, confirmation, snapshot, valuation, document, real time, verification and combination.

Standard message types including FpML, FIX, FIXML, SWIFT and ISO 20022, as well as generic data formats, variants of FpML such as MarkitSERV, DTCC Deriv/Serv, LCH and FIXML derivatives such as VCON and CME are available out-of-the-box making integration of any external or internal system easy.

## Ease of integration

Users can leverage the continual investment in Volante Designer's capabilities for data mapping, enrichment, business rule setting, routing for integrating with reference data, OMS, middle and back office systems and the in-built functionality to handle the Unique Swap Identifier (USI) requirements to build the reporting application quickly.

## Leverage existing infrastructure

Volante offers the best of both worlds – an efficient system at no extra investment on additional infrastructure with unique features of flexibility and ease of integration.

Flexibility to deploy on any middleware including Enterprise Service Bus (ESB), message brokers, application servers, workflow engines or existing proprietary infrastructure platforms not only saves money but also allows the new application to comply with the enterprise architecture standards.

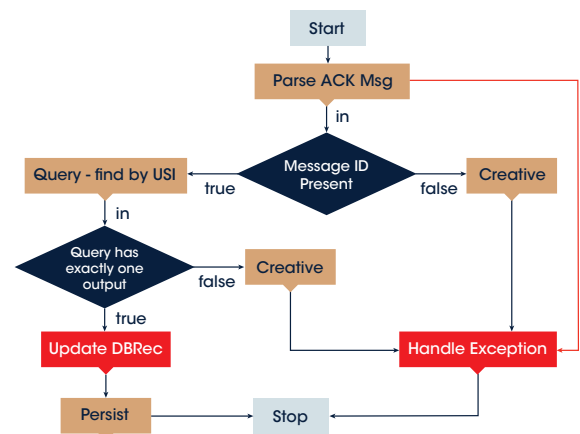
Seamless integration with any technology (database, application or network) allows the processing of any derivatives messages and status updates from any source and helps to leverage existing investment on data warehouses, analytical engines, CEP engines, market data feeds, etc.

## Easy upgrades to changes in external message standards

Volante monitors all directives from central authorities and provides periodic releases to changes made by external agencies such as SWIFT, DTCC, ISDA, FIX Protocol, etc. The significant differentiator for Volante is that Volante provides the upgrades within a few weeks after the changes are announced by the standards bodies. This enables firms to respond immediately to new business processes and incorporate the changes, test their application and be ready well before the mandated change date. Users can easily discover messages/fields that are affected by changes, saving a significant amount of time and effort in implementing system upgrades.

## Exception handling

The ability to develop exception handling/error reporting (from items reported by SEF, DCO, SDR) through dashboards, e-mail alerts, etc. is an integral part of Volante designer. The ability to invoke existing exception handling systems saves time. The error codes and error definitions as defined by DTCC are available in the framework.



## Rapid development

Using the Volante GTR framework with constantly updatable out-of-the-box plug-ins, firms can save time and effort by leveraging Volante's market-wide on-going functional enhancement. The time and effort savings are gained through various aspects, samples of which are as follows:

- » The requirement understanding gap is reduced by the domain rich pre-built message plug-ins. Business/data analysts can do the mapping and set up business rules saving both development and clarifications time.
- » The code generation is automatic hence there is no development time required for coding.
- » Automatic documentation minimizes the project risk from any resource attrition or addition of new team members saving significant documentation efforts.
- » Business validations as mandated by DTCC are built into the framework. Besides the flexibility to add user-defined rules, the ISDA defined FpML rules are also available out-of-the-box.
- » Various rules, for example in the case of reporting – real time, 15 minute interval, batch, end of day, MIS, etc. can be easily set. Similarly rules for segregation – segregate messages for state management, lifecycle event triggers, etc. can also be set.
- » Volante users have the ability to filter trades by Swap Execution Facility (SEF) executed, bilaterally executed, block trades, exotics, canceled, corrected, lifecycle event & snapshot event (for select products).
- » Various reconciliations such as count compare, reconciliation against SEF reported, DCO reported and SDR reported can be developed easily.
- » Easy to perform data enrichment with additional fields from reference data tables, LEI information, invoke and add inputs from mark to market, collateral valuation systems.
- » Complete audit trail – complete audit trail is available with capabilities to build drill down functions for compliance monitoring.
- » Re-usability – Volante follows a modular approach and the various parameters, rules, functions defined in one model are completely re-usable for similar requirements giving significant flexibility and time savings.
- » **Webforms designer** helps to build dashboards quickly – providing holistic views of the message flows and status of the underlying business. Highly intuitive GUI and operation means the tool can be used by line of business and by IT.

Transaction Type	USI Value	Primary Asset Class	Secondary Asset Class	Option Type	Product ID	Option Style
TRADE	DTCC USI 5	FX	FX	P.	GTR VAN	EUROPEAN("EU").
TRADE	DTCC USI 6	FX	FX	P.	GTR VAN	EUROPEAN("EU").
TRADE	DTCC USI 7	FX	FX	C.	GTR VAN	AMERICAN("AM").
TRADE	DTCC USI 8	FX	FX	C.	GTR VAN	AMERICAN("AM").
TRADE	DTCC USI 9	FX	FX	C.	GTR VAN	AMERICAN("AM").
TRADE	DTCC USI 10	FX	FX	P.	GTR VAN	AMERICAN("AM").
TRADE	DTCC USI 11	FX	FX	P.	GTR VAN	AMERICAN("AM").
TRADE	DTCC USI 12	FX	FX	P.	GTR VAN	AMERICAN("AM").
TRADE	DTCC USI 13	FX	FX	C.	GTR NDV	EUROPEAN("EU").
TRADE	DTCC USI 14	FX	FX	C.	GTR NDV	EUROPEAN("EU").
TRADE	DTCC USI 15	FX	FX	P.	GTR NDV	EUROPEAN("EU").
TRADE	DTCC USI 16	FX	FX	P.	GTR NDV	EUROPEAN("EU").
TRADE	DTCC USI 17	FX	FX	C.	GTR NDV	EUROPEAN("EU").
TRADE	DTCC USI 18	FX	FX	C.	GTR NDV	EUROPEAN("EU").
TRADE	DTCC USI 19	FX	FX	P.	GTR NDV	EUROPEAN("EU").
TRADE	DTCC USI 20	FX	FX	P.	GTR NDV	EUROPEAN("EU").

Webforms Designer